



Welcome to the 2018 listing of offerings from Klondike Valley Nursery. Here you will find apples, berries and small fruits followed by ornamental conifers and broadleaves. All of our plants are field-tested at our home on the banks of the Klondike River in the central Yukon, and those exclusive to our nursery are marked with an 'x'.

We regularly provide plants to customers throughout the Yukon and have begun expanding beyond the territory; please contact us to discuss shipping. We are always happy to engage about what plants would suit you and your site, so please don't hesitate to get in touch by e-mail or phone. Happy planting!

John Lenart & Kim Melton

klondikevalley@gmail.com

867-334-0632

Apples

The youngest apple trees are called whips and are a single stem. With the first branching trees become feathered whips; beyond that they are graded by size. Most apples are available as whips and feathered whips, with a limited number of larger trees are available for the following cultivars: Norland, Parkland, September Ruby, Rescue & Trailman. The majority of our trees are created and grown on-site in the Klondike, however where we do not own a license to propagate or where the demand is greater than what we can supply we import a small number from a trusted supplier.

Hardiness We classify our trees according to our own observations. Talk to us about your site as microclimate makes a huge difference. Broadly speaking, Ultra-hardy trees can survive and fruit in much of the Yukon with minimal protection; Hardy trees require winter wrapping; Shelter trees require a year-round coldframe. We recommend playing it safe and tarping all unsheltered trees for the winter; no apple tree wants to see -40°C!

- Apple trees vary in how early they produce fruit, with the most precocious beginning to fruit at the feathered whip stage.
- To fruit well, apples require pollination by a tree of another cultivar.
- All trees are grafted onto Siberian crab (*baccata*) or *columbia* rootstock unless otherwise indicated.
- Apple trees are currently containerized.

Pricing: Whips \$55, Feathered whips \$80, Larger trees \$95 and up

*Autumn
Delight*



Semi-dwarf tree that produces high quality late-maturing dessert apples. Very good keeper. Though hardy enough for outdoor growing, at our site the fruit requires the extra season length provided by a shelter to mature.

*(Apples cont.)**Michelin*

A hardy prolific fruiting cider apple that bears at a young age.

Norda

Shelter tree. Delightful floral-scented apple with excellent keeping qualities. Easily maintained at a manageable size. Look for it next season on a dwarfing rootstock.

Noret

Ultra-hardy. Small bright yellow and red apple-crab, slightly less sweet than Trailman. Fruit is lovely for snacking with a short shelf-life.

Norland

Hardy semi-dwarf tree that produces early ripening, delicious, crisp, all-purpose apples. One of our reliable favourites.

Parkland

Hardy, vigorous tree that ripens in late August with beautiful shades of pink, red and white. Good sweet/tart flavor balance.

PF12

Hardy, precocious, semi-dwarf tree that produces high quality golden-yellow fruit prolifically. Easy to maintain.

Prairie Sun

Hardy, precocious, dwarf tree that bears abundant early season, full-size yellow apples. Shelter trees from wind. Reliable producer.

Rescue

Ultra-hardy, dark red apple-crab. Prolific and early, Rescues have a short shelf-life but work well in preserves. The fruit have a good flavor that blends sweet and tart.

Trailman

A Yukon favourite, especially with very young growers, this ultra-hardy apple-crab produces large numbers of small candy-sweet bronze-yellow apples. Great for snacking.

(Apples cont.)

Coming Soon

9-22 End



A large, multi purpose apple, great for pies, reportedly very hardy and productive. Still under trial and development

Bolonoyev's Early



This short-season Russian cultivar is proving its hardiness in Dawson. Medium size yellow apples ripen in late August and early September.

Fort Mac Mac



Sturdy, rugged and capable of producing very large crimson apples with white flesh. Looking to become a new favourite!

Norda/O3



A dwarf version a tree that requires a long season to mature, making this selection even more suited to greenhouse or coldframe production. One of our best keepers.

September Ruby



Listed as Zone 1, this tree produces a large, firm, scarlet apple that stores well and holds its texture in cooking.

Sunnybrook



A cider apple suitable for sheltered sites that literally drips with juice when you bite into it. Our Sunnybrook has been with us since 1994.

Nuts

To date the only 'nut' we have is the Siberian Stone Pine, producer of pine nuts. Also see description in ornamentals.

Pricing: 1 gallon - \$35, 2 gallon - \$45, field-grown also available

Pinus cembra siberica
Siberian Stone Pine



These trees can live five to eight hundred years, so give them room – around 20' from any other large trees. Cones provide pine nuts by approximately fifteen years of age. Plant several if you have this treat in mind.

Berries

Blackcurrants and Saskatoon berries have long been known to Yukoners for their hardiness and plentiful yield. A relative newcomer to the Canadian berry scene is the haskap (*Lonicera caerulea*), excellent for fresh eating, freezing, juice and jams. Flavor varies by cultivar from tart-sweet to very sweet. The bushes also make attractive hedges, growing in thick and requiring very little maintenance. Haskap require cross-pollination by a different variety that is genetically distinct to be productive, and can tolerate a range of soils and moisture regimes. Bushes may reach 5' across and 4-6' high depending on conditions.

Pricing: 1 gallon - \$20

Haskap
Aurora



An older generation of haskap initially bred as a 'pollinator' that is proving to be a winner in taste and productivity. Upright form. Pairs well with Honeybee and most older varieties (Tundra, Borealis, Indigos etc).

New
Haskap
Boreal Beast



The latest release from the University of Saskatchewan, Beast is the biggest berry yet. Initial trials in the Klondike suggest that it hardy enough for the Yukon. Limited quantities.

Haskap
Boreal Blizzard



Sister to Beast and among the top varieties for size and flavor, Blizzard has done well in its first couple of Yukon winters. Limited quantities.

Haskap
Honeybee



Originally a 'pollinator' like Aurora, Honeybee is surprising breeders with extremely high yields as it comes into its prime. Upright form, resistant to powdery mildew.

Haskap
Zol



One of the largest and sweetest of the old Russian varieties, Zol is extra-hardy. Firm berries are the first in our fields to ripen. Low-growing, wide bush.

Blackcurrant
Ben Nevis



Very hardy moisture-loving shrubs producing heavy crops of large, juicy, tart berries with a distinctive flavor. Great for adding an extra element to pies and jams, or for making juice or liqueurs.

Saskatoon
Martin



The hardy Saskatoon does well on well-drained soil and can get by with little maintenance, though cleaning out the shed leaves each year minimizes potential for insect pests. Firm berries are excellent for pies and jams.

Sour Cherries

Another star from the University of Saskatchewan, the Romance Cherry series is proving to include some very successful plants for the Yukon. While cross-pollination may improve productivity it is not required for fruiting. Cherries require a sunny site with good drainage and plenty of nutrition. Bushes may reach 5' across and 4-6' high depending on conditions.

Pricing: 1 gallon - \$20

Romeo



Broad low bush with early, sweet-tart cherries ripening to brilliant crimson. Form keeps it under the snow for winter protection. Our favourite!

Juliet



Upright bush yielding high amounts of large, very dark, rich cherries. Flavor improves with complete ripening, so requires some patience.

Grapes

All grapes require shelter in the Yukon as they need a long warm season to fruit successfully. We have had success with vines grown in 5-10 gallon containers that are protected in the winter from temperatures colder than -15°C, and with in-ground planting within a year-round cold-frame where temperatures do not fall below -25°C.

Pricing: 1 gallon - \$20

Valiant



The hardiest red grape we have found, Valiant ripens to dark purple. It is a seeded grape excellent for table use and purported to make a nice jelly, though we have never saved enough to try!

Yukon Origin Collection Ornamental Dwarf Conifers

Our dwarf conifers are derived from hand-selected trees in the Yukon wild, carefully cultivated to allow their unique forms to express themselves. The trees in this collection are exclusive to our nursery. From elegant to whimsical, there is sure to be a look that appeals. Currently, our Yukon dwarfs are all white spruce, *Picea glauca*, with introductions from *Picea mariana* (black spruce) and *Pinus contorta* (lodgepole pine) in development.

Pricing

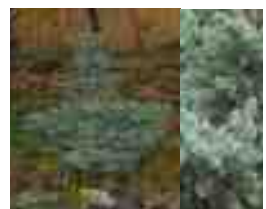
<i>Containerized</i>	miniature and dwarf - \$54 for first year, plus \$19/year thereafter
	semi-dwarf and standard - \$75 for first year, plus \$45/year thereafter
<i>Field-grown</i>	miniature and dwarf - start at \$175 for 5 year old trees, plus \$30/year thereafter
	standard and semi-dwarf - start at \$195 for 5 year old trees, plus \$50/year thereafter

Picea glauca
'Aurora'^x



A chameleon of a dwarf tree. In full sun its bronze/gold-needles can sunburn, and it sports pale sea-green needles if grown in the shade. Open graceful form that grows up to 15 cm year. Originating at our nursery in the Klondike, it is best in a large planting as a companion to others or as a feature specimen in a sheltered garden space. One of a kind for colour.

Picea glauca
'Emerald
Rose'^x



Upright dwarf, informally conic in shape. Dark, emerald green white spruce with dense needles. Grows up to 8 cm year and produces dark brown buds. Useful in beds, borders or foundation plantings; use as an accent or small feature specimen. Parent tree discovered near Tatchun creek north of Carmacks, fell in a windstorm in 2012.

Picea glauca
'Fox 3'^x



The best in our collection of compact, fastigate, dwarf white spruce. Somewhat columnar with brown buds among a dense display of rich blue-green needles. Grows only 5-8 cm year, reaching 30 cm wide and 50 cm tall in ten years. With minimal pruning can form an egg-shaped ball. Much slower growth on a standard (3 cm a year). Some cleaning out of dead needles recommended every few years. Parent resides on the shores of Fox Lake.

Picea glauca
'Freedom's
Choice'^x



Unusual low-growing dwarf with distinctive olive green, arching, horizontal growth. Can be used as part of a foundation planting, in a group or as a specimen on its own. Grows 5-8 cm a year. Parent was a 75 year old broom the size of a minivan along the Klondike river, which has toppled since collection.

Picea glauca
'Hillside'^x



Dwarf white spruce with short grey-green needles and heavy, round, brown buds. Grows up to 8 cm year. Originated in the Stewart river valley where the parent broom grew like a ten foot rug hanging out the side of a typical spruce tree. Like many children it does not follow after its parent, instead expressing a round bushy form with upright growth. Suited to groups, beds and borders rather than foundation plantings.

(Yukon Origin Collection cont.)

Picea glauca
'King'^x



Our fastest growing semi-dwarf white spruce, reaching a height of 2.5 meters in ten years on moist ground. Columnar and fastigate with large orange-brown buds and typical needles. Suited to group or specimen planting where an unconventional stately form is desired. Originated in the Faro region.

Picea glauca
'Klondike Top Hat'^x



Mid-green semi-dwarf with upright growth in a globose form. Very consistent, excellent for foundation or group plantings or a dense hedge, growing to 1 meter high in ten years. Slower growing and more compact on a standard. Good companion to Skookum Sarah or Minto Fats in a group. Originated in the Klondike Valley.

Picea glauca
'Liberty'^x



Dwarf white spruce with stiff mid-green needles and prominent, round, gold-brown buds. Strongly upright growth (fastigate) within a boxy open form. Grows up to 8 cm year, self-cleaning. More formal or uniform than Emerald rose in outline.

Picea glauca
'Minto Fats'^x



Dwarf, globose, fine-needled white spruce. Light green in colour with numerous gold brown buds. Very consistent, excellent for foundation or group plantings. Remains low and wide with no pruning, reaches 1 m high by 1 m wide in 10-15 years. Discovered in the Minto Flats area of the Yukon River valley.

Picea glauca
'Minto Moon'^x



Semi-dwarf to dwarf. Broad, low-growing, glaucous spruce with very stiff, wide, reflexed needles. Impetuous, responds well to light pruning. Buds are brown with a hint of pink, very showy. Makes a great dwarf on a short standard. Well-suited to foundation plantings and group settings. Ground-hugging plants grow 7-15 cm year, 4-8 cm on a standard. Parent a dense basketball-size dwarf growing north of McCabe creek, Yukon.

Picea glauca
'Petite Pat'^x



Dwarf to miniature. Bun-shaped with fine, short, bright needles. Grows 2-5 cm a year. Numerous small brown buds; dense regular form. Use in a small garden or flower bed setting. Little pruning required to maintain formal shape. 70-year old parent the size of a cantaloupe, collected north of Carmacks.

Picea glauca
'Skookum Sarah'^x



Strong semi-dwarf with low wide habit. Jade-green needles with prominent glaucous stripes. Versatile; great in a foundation planting, in a group or as a specimen on its own. Rugged and adaptable, grows 5-12 cm year. Parent was a fifty year-old 3 x 2 m broom north of Partridge Creek Farm, destroyed in power-line clearing.

(Yukon Origin Collection cont.)

Picea glauca
'Tulip'^x



Fine, soft, dense needles cover this bright green dwarf gem. Reddish brown bark and orange-brown buds contrast with the foliage making it very pretty. Growing only 3-5 cm year, it is at its best in a garden space up close to be thoroughly enjoyed. Another Klondike Valley original, the parent is very globe-shaped and over a meter across at 70 years of age.

Coming soon
Picea glauca
'Arctic
Crown'^x



A splendid semi-dwarf with variable form: on dry sites, low and bunching, but displaying a stiff upright trunk, strongly horizontal branches and short dense clusters of branchlets on wetter ground. Arctic Crown has exceptionally long, heavy, curved, blue-green needles, concealing buds that break out in the spring in shades of purple to rose – a very showy tree. Grows 7-18 cm a year. Responds well to pruning top (apical) shoots, becoming more dense. More dwarf on a standard. Use as a feature specimen or in a group. Discovered in the Klondike Valley.

Exotics

Only available in containers. Start at \$39 for 1 year old trees, with an additional \$18/year thereafter.

Abies balsamea & *A. lasiocarpa*
Balsam Fir &
Sub-alpine fir



Balsam fir is a fragrant soothing tree with soft needles in a classic conic form; seed from Saskatchewan. Sub-alpines seed is collected in Stewart crossing, producing trees more spire-like in form and slower growing; also very fragrant.

Picea glauca 'Pendula'



Originating in the Guelph area of Ontario, this popular white spruce grows to be graceful and upright with draping pendulous branches. Standard size, excellent formal specimen. Can grow up to 30cm a year. Plant only as far north as Dawson. The best in its class until we find a similar one in the Yukon. Best form is achieved once established in-ground.

Picea pungens
'Procumbens'



This beautiful prostrate blue spruce flows like waves across the ground. Long, very blue needles, highlighted by baby blue new growth in the spring. Grows up to 20 cm a year. Must have snow cover to look its best in spring. Best in rock gardens and over slopes or stones.

Pines from the Borderlands

We offer 3 exclusive dwarf Lodgepole pines from areas near the BC-Yukon border. All are magnificently full-formed, suited to being accents within a large bed or group planting, or as feature specimens in their own right.

Pricing

Containerized - \$54 for 1 year old trees, plus \$19/year thereafter.

Field-grown - \$195 for 5 year old trees, plus \$50/year thereafter.

Pinus contorta
'Gordon'^x



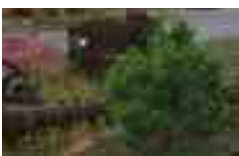
Gordon is a great dense dwarf lodgepole pine from the Cassiar, BC area, that has grown to nearly 2 meters high in ten years and almost as wide. Much more majestic and full-formed than a typical imported Mugo pine. Situate prominently as a specimen or in an open corner to make a statement.

Pinus contorta
'Percy'^x



Our mid-sized fellow. Stout and full-bellied, Percy is tough and good-looking at nearly 1.5 meters tall in ten years. Dense needles contrast with big reddish-brown buds. Cultivated from a prominent broom in the Tagish area of southern Yukon.

Pinus contorta
'Boya'^x



The smallest of the trio, Boya has reached a meter tall in ten years. Broad form with very long needles. Originated in Northern British Columbia, can be cold-damaged in the central Yukon.

The Siberians

Hailing from Russia, with love, this collection comprises pines and larches well-suited to northern Canada. The airy, feathery larches are the fastest-growing of our trees. Prices are listed with tree descriptions.

Pinus sylvestris
Scotch Pine
'Lake Baikal'



Field-grown 4'-8' \$350+

Fast growing. Open form similar to our local lodgepole pines but broader with lighter colored needles and bark. Very tough large trees with green needles in summer and gold to reddish-gold needles in winter.

Pinus cembra siberica
Siberian Stone Pine



1 gal \$35, 2 gal \$49, FG - \$55/first 2 feet + \$30/foot thereafter
With a lifespan of 500-800 years, these trees need room. The lower branches remain growing over the life of the tree, making mature specimens full-bodied. Cones provide pine nuts by approximately fifteen years of age. Plant several if you have this treat in mind.

(The Siberians cont.)

Larix siberica
Siberian larch
(seed-grown)



1 gallon \$29, 2 gallon \$45, larger containers \$20/foot
Grown from seed from our own thirty-year old trees, the fastest-growing conifers we offer (50-75 cm/year). Light green and airy in summer, golden in fall and open to light in winter. Generally conic when young, becoming more broad with age.

Larix siberica
Siberian larch
'The Funky One'^x



1 gallon \$49, 2 gallon \$65, larger containers \$22/foot
Big, strong selection with a top that will grow in any direction but straight up. The branches sweep out as if the tree is in a permanent pirouette. Very unconventional; suited for those who like to dance their way through life. Grows 50-75 cm/year.

Larix siberica
Siberian larch
'Watson'^x



1 gallon \$49, 2 gallon \$65, larger containers \$22/foot
A slower-growing selection in a strongly upright formal cone shape. Intended for more traditional folks and landscapes with an appreciation for elegance. Particularly short green needles with a bluish tint.

Larix siberica
Siberian larch
'Lime Panda'^x



1 year old \$54, 2 years \$74, inquire for older specimens
A very dwarf gem with upright, fastigate shoots that branch irregularly. Heavily covered with soft, dense, emerald green needles. Typical golden fall colour and leaf drop as other larches. Best suited to small gardens or sheltered site, small enough for container growing.

Broadleaf Ornamentals

We take pleasure in trying to grow all kinds of trees and shrubs in our quest to find those that can thrive in Yukon conditions. Often we find a single individual of exceptional hardiness or beauty that we then propagate to bring a new element to Yukon gardens. In addition to their aesthetic appeal, many of these trees are loved by birds and provide a food source for insect pollinators. In this area perhaps over all others are some trees that we generate on demand, as they themselves require a high degree of care. If you have a particular interest, please get in touch, as we always have more than we list.

Pricing – variable, please inquire

Acer tartaricum
Amur Maple



Amur Maples are hardy trees that often assume a large bush-like form in the Yukon. They do deliver the startling colours we expect from maples – it is worth making your selection in the fall.

Betula sp.
Birch



We have a number of grafted birches, including hybrid Swedish trees as well as locally collected specimens such as 'Tombstone Red'^x (exclusive).

*(Broadleaf Ornamentals cont.)**Carragana sp.*

The carraganas are a popular leguminous shrub on the prairies. Our favourite is a weeping specimen that we graft high. Requires annual maintenance, suitable for keen beginner pruners. Made to order.

Crataegus sp.
Hawthorne

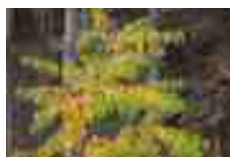
Our best is a 4 m, round-headed tree grafted on hardy stock that produces black fruit. The rootstock itself produces a fine 3 m shrub with orange fruit; both have great fall colour.

Fraxinus x
Ash

We grow green ash for general use and carry a very hardy hybrid ash for feature specimens. Slow growing and requiring good soil.

Prunus padus
Mayday

A longstanding favourite, Maydays are excellent small trees with showy white flowers. By growing them locally we help prevent the introduction of diseases originating in the prairies.

Prunus pennsylvanica
Pin Cherry

Small tree that produces numerous cherries great for jelly. Beautiful long leaves on red stems hang on into the fall in glowing gold. Can form groves.

Prunus virginiana
Schubert Cherry

We grow ours from cuttings taken from very hardy local trees with a proven record. Green in early summer, leaves turn rich burgundy mid summer on a small rounded tree that flowers and fruits similar to Mayday

Quercus macrocarpa
Burr Oak

Slow-growing, long-lived tree for warm sites on good soil. Very rare tree in the Yukon. We have seed-grown as well as a grafted selection that has excellent fall colour. Presently sold out, available again in 2019.

Sorbus acuparia russica
Mountain Ash
'Calgary'^x &
'Evans'^x

Upright selections of the hardiest mountain ash we have found in 15 years of trials. Blooms at a young age and produces flat clusters of red berries that accentuate the glorious autumn shades of the leaves.

Ulmus americana
American Elm

Another unusual tree to be grown in the far north. Original seedlings collected in Winnipeg are now up to 5 meters tall. Great feature tree, will withstand dry conditions but grow much better with regular moisture.